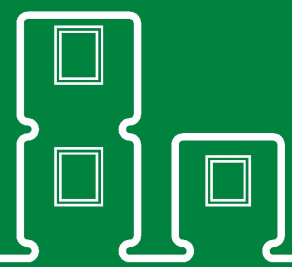
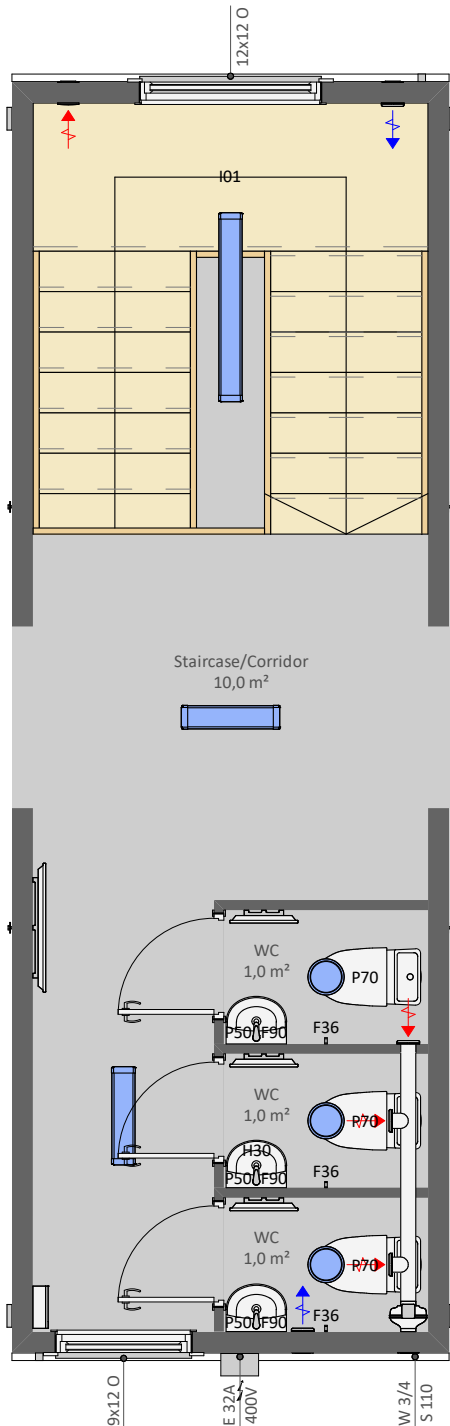


# T2W3



**T2W3** is an upper floor staircase module with three toilets



## **PRODUCT SPECIFICATION:**

Building area	24,3 m <sup>2</sup>
Total area, of which	13,0 m <sup>2</sup>
- Staircase/Corridor	10,0 m <sup>2</sup>
- WC	1,0 m <sup>2</sup>
- WC	1,0 m <sup>2</sup>
- WC	1,0 m <sup>2</sup>
Transportation measures	2950 x 8570 x 3000 mm
Inside Measures	2620 x 8120 x 2400 mm
Weight	ca´ 4900 kg
Roof angle	1:60

## **INCLUDING:**

- C01 - Galvanized steel profile frame, liftable with forklift and crane
- I01 - Wooden varnished staircase with fences
- F36 - Clothes hanger hook 1 pc on wall
- F90 - Mirror on wall
- P50 - Ceramic basin with mixer
- P70 - Toilet seat and toilet paper roll holder
- H30 - Water heater 10 L

## **AVAILABLE AS ADD ON PRODUCTS:**

- CEWB - Long side wall opening element B (filling element)
- CEWC1 - Long side wall opening element C1 (without door leaf)
- CEWC2 - Long side wall opening element C2 (with ext. door leaf)
- CEWC3 - Long side wall opening element C3 (with int. door leaf)
- CEWC4 - Long side wall opening element C4 (with remov. fill. elem.)
- S02 - Window grid 900x1200 mm
- S05 - Window grid 1200x1200 mm
- S14 - Venetian blind 900x1200 mm
- S18 - Venetian blind 1200x1200 mm
- S22 - Locking bar for external door
- S25 - SmartLock for doors
- H50 - Heat Pump/Air Conditioning (Air-Air)
- V35 - Wall fan OUT-100/IN-100 with heat recovery
- E10 - Electrical connection cable 32A when campus building
- External connections when campus building
- Internal connections when campus building

Producer: